

**COMPENSATORS**

**TECHNICAL TERMS**

I. Ordering company:

II. Working conditions:

1. Medium:

2. Temperature:

3. Pressure:

outside:

inside:

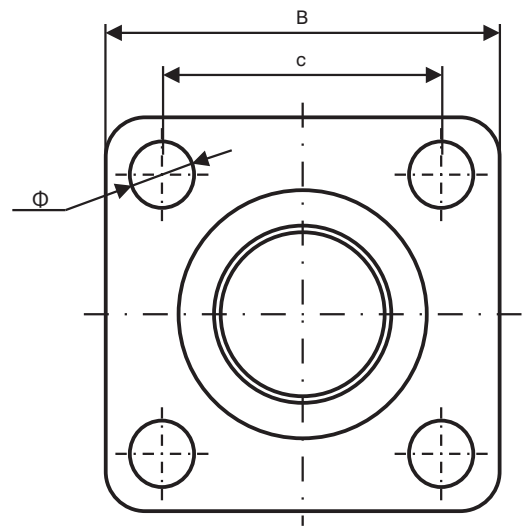
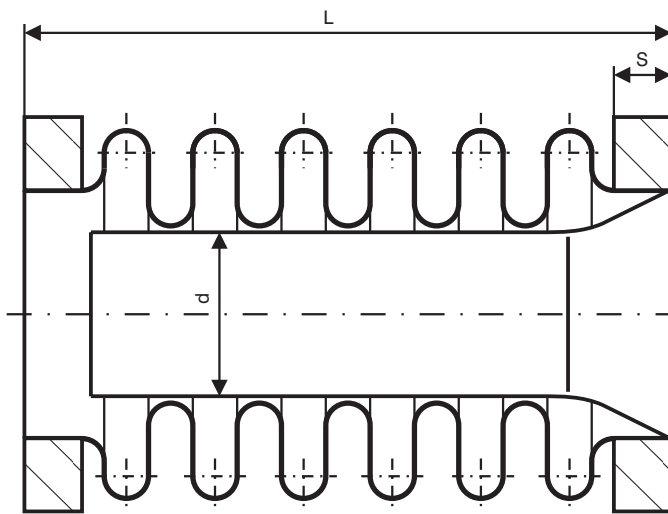
4. Life, duration in cycles /frequency/:

5. Necessary movement:

axial:

lateral:

angular:



III. Compensator's type

1. Flanged – dimensions of flanges:

DN =

PN=

In case of non-standard flanges drawing should be provided with needed dimensions.

2. Welded:

3. With protective tube:

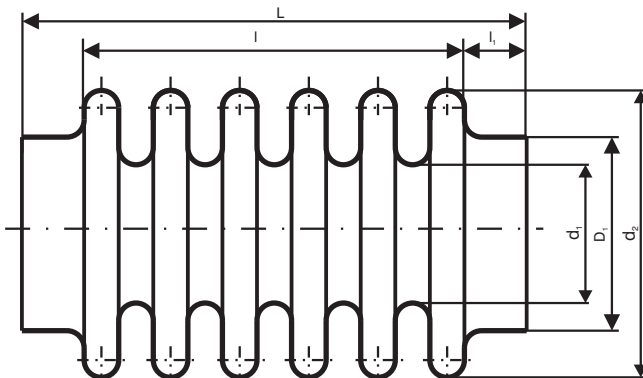
- Tube dimension:

D=

δ=

L=

IV. Bellows's data:



1. Requirements for the material:

2. Outer diameter of the bellows

d2=

3. Inner diameter of the bellows

d1=

4. Ends diameter

D1=

5. Length of corrugated part

l =

6. Length of cylindrical part

l1 =

7. Total length

L=

8. Number of convolutions

n=

V. Other requirements – when possible drawing /sketch/ or sample to be provided